

**AQU@FAN: CONDENSATE LIFT PUMP - AHC AHN 20/30/40/50/60/70**

**AQU@FAN: KIT POMPE RELEVAGE DES CONDENSATS - AHC AHN 20/30/40/50/60/70**

**AQU@FAN: BAUSATZ KONDENSWASSERFÖRDERPUMPE - AHC AHN 20/30/40/50/60/70**

**AQU@FAN: KIT POMPA DI SOLLEVAMENTO DELLE CONDENSE - AHC AHN 20/30/40/50/60/70**

**AQU@FAN: KIT BOMBA DE ELEVACIÓN DE CONDENSADOS - AHC AHN 20/30/40/50/60/70**



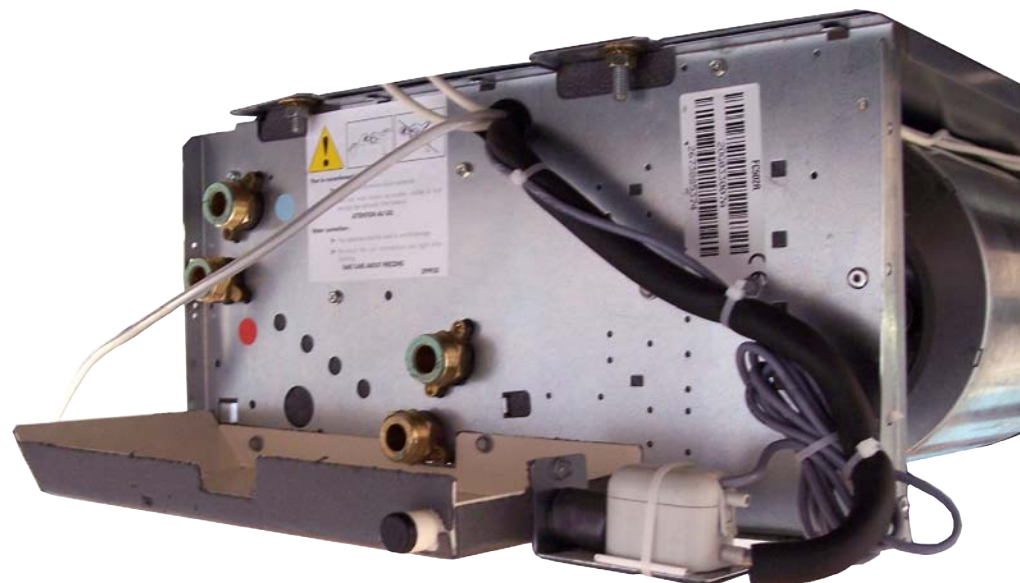
**POWER SUPPLY MUST BE SWITCHED OFF BEFORE STARTING TO WORK IN THE ELECTRIC CONTROL BOX!**

**MISE HORS TENSION OBLIGATOIRE AVANT TOUTE INTERVENTION DANS LES BOITIERS ELECTRIQUES.**

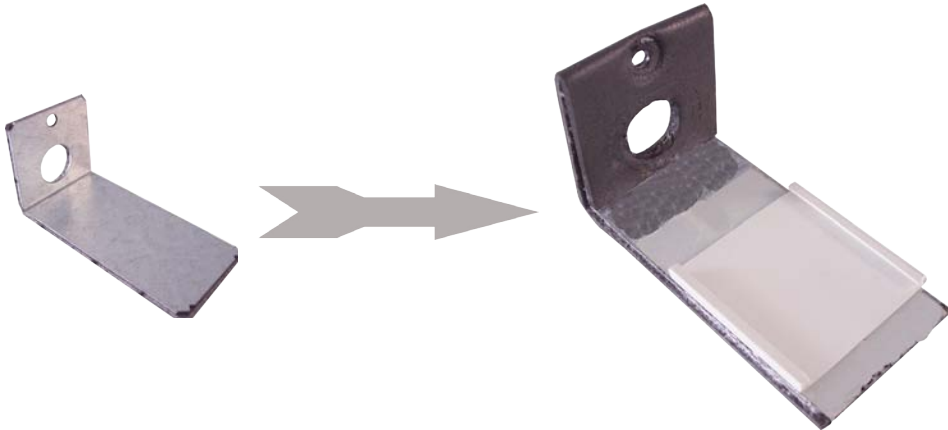
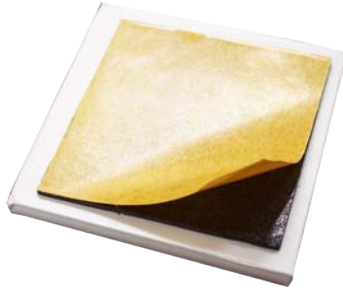
**VOR JEDEM EINGRIFF AN DEN ANSCHLUSSKÄSTEN UNBEDINGT DAS GERÄT STROMLOS SCHALTEN!**

**PRIMA DI OGNI INTERVENTO SULLE CASSETTE ELETTRICHE ESCLUDERE TASSATIVAMENTE L'ALIMENTAZIONE !**

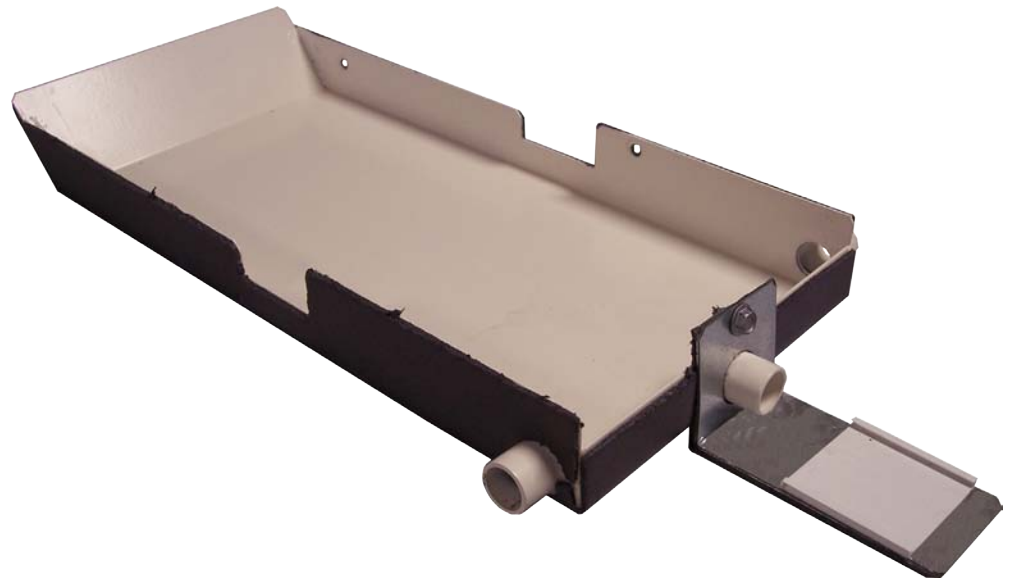
**PUESTA FUERA DE TNSIÓN OBLIGATORIA ANTES DE CUALQUIER INTERVENCIÓN EN LAS CAJAS ELÉCTRICAS!**



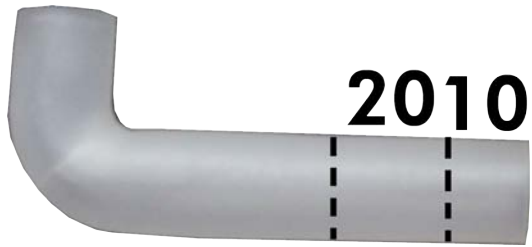
1



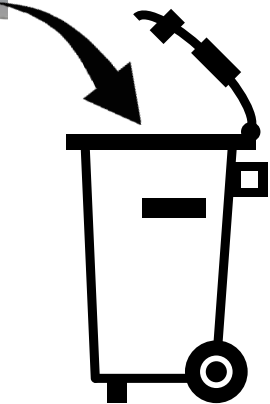
2



3



L=10 mm



L=20 mm



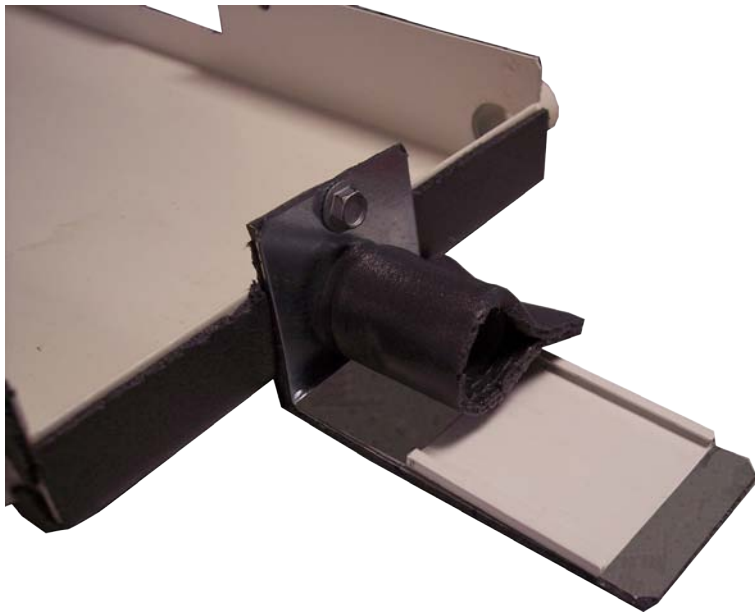
4



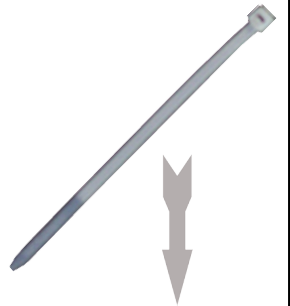
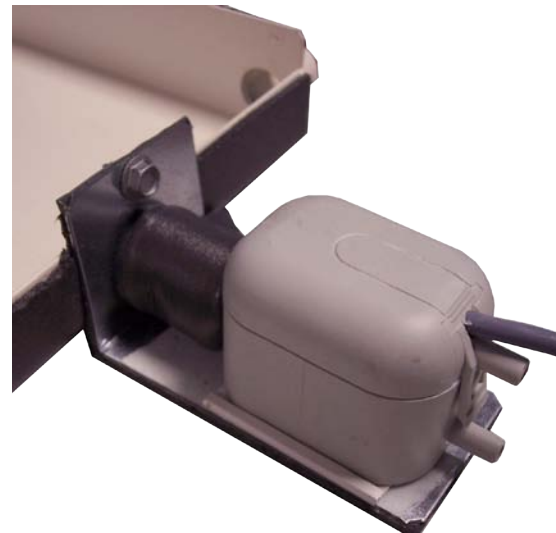
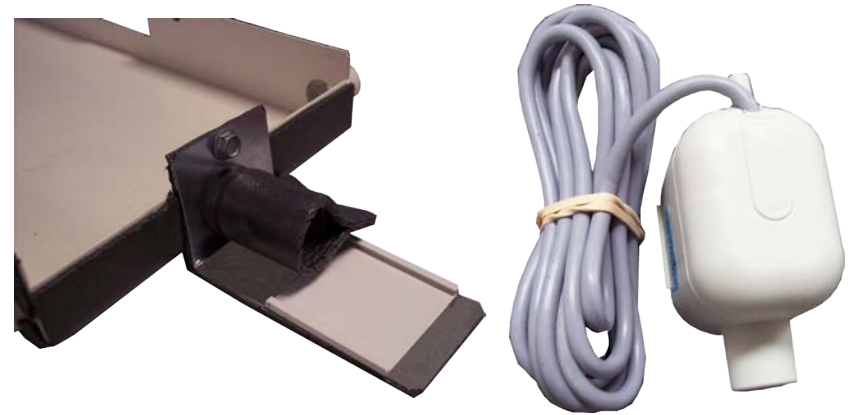
L=20 mm



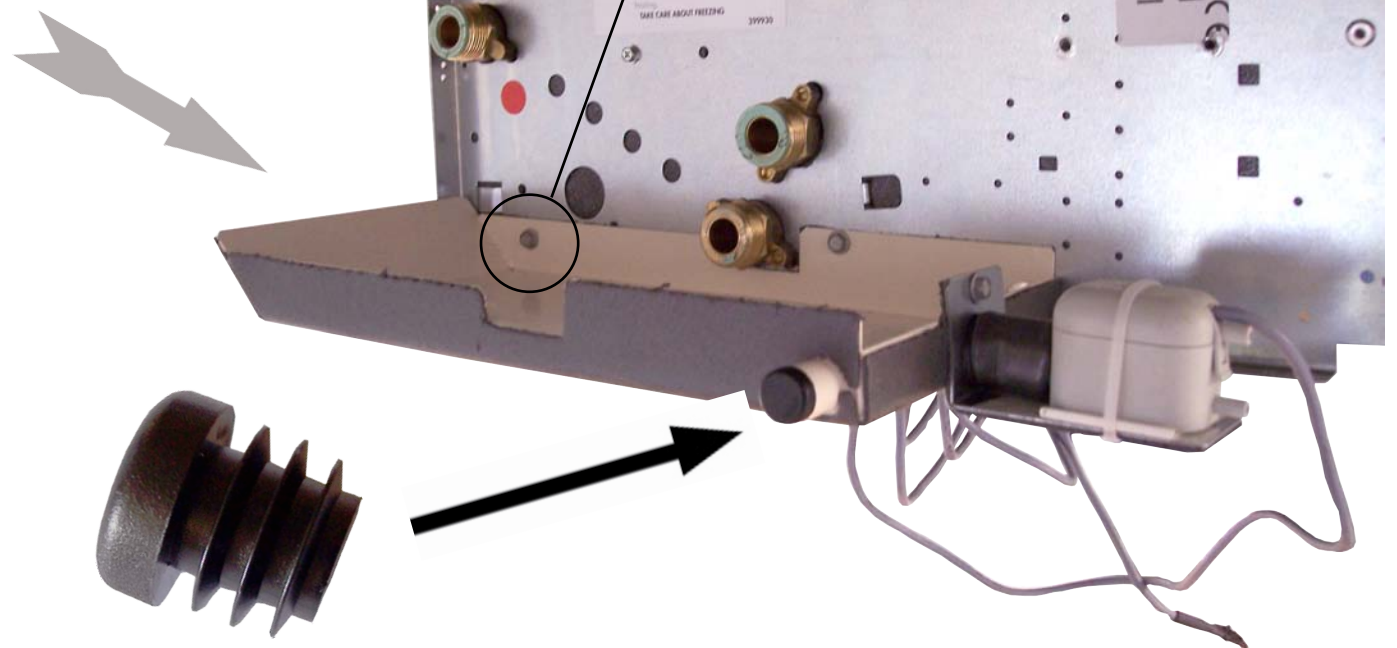
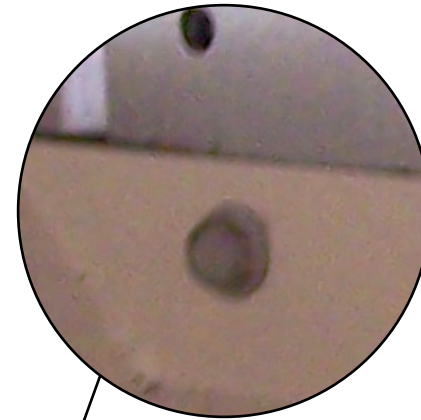
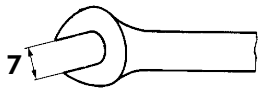
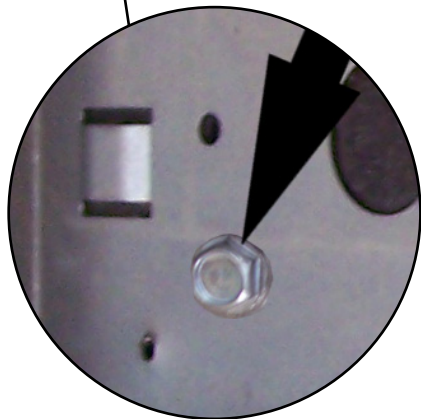
5



6



7



8



9



10

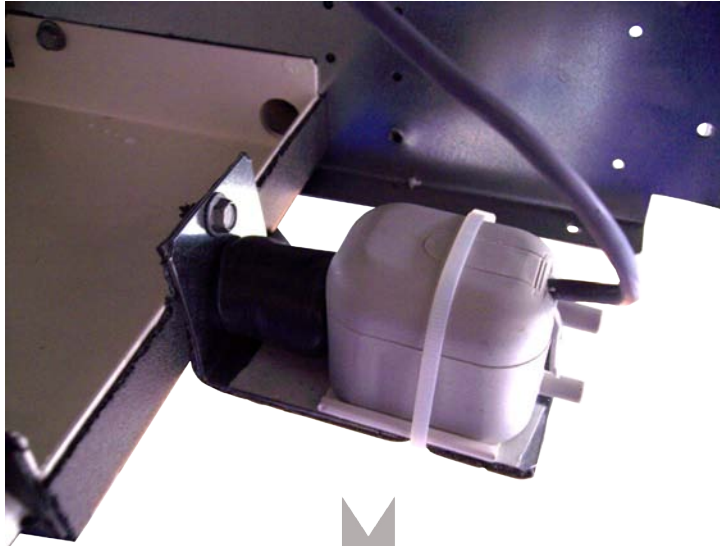


L=70 cm

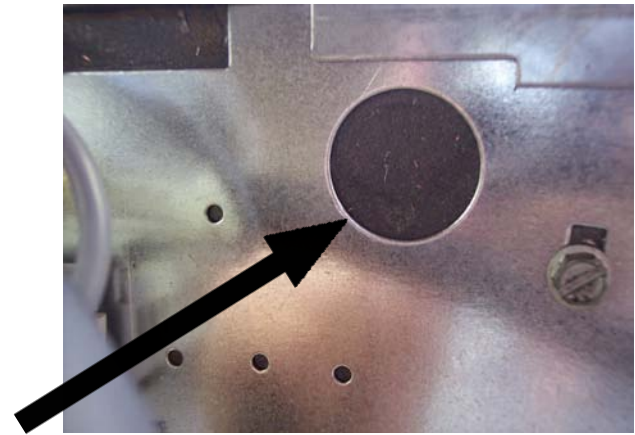
11



12

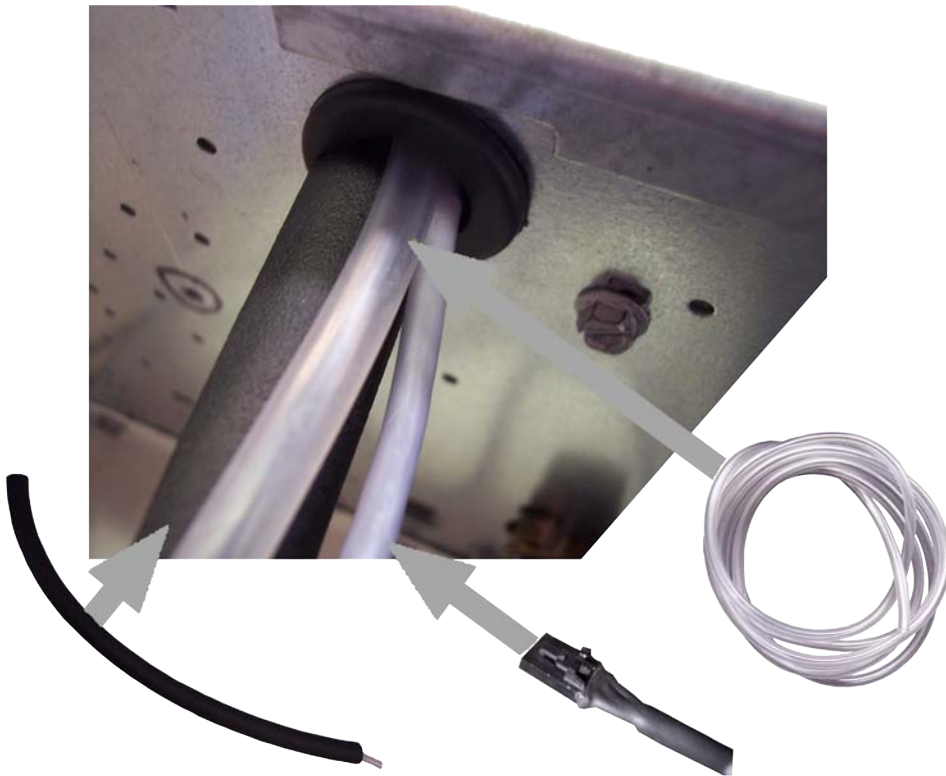


13

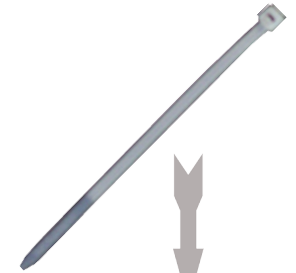
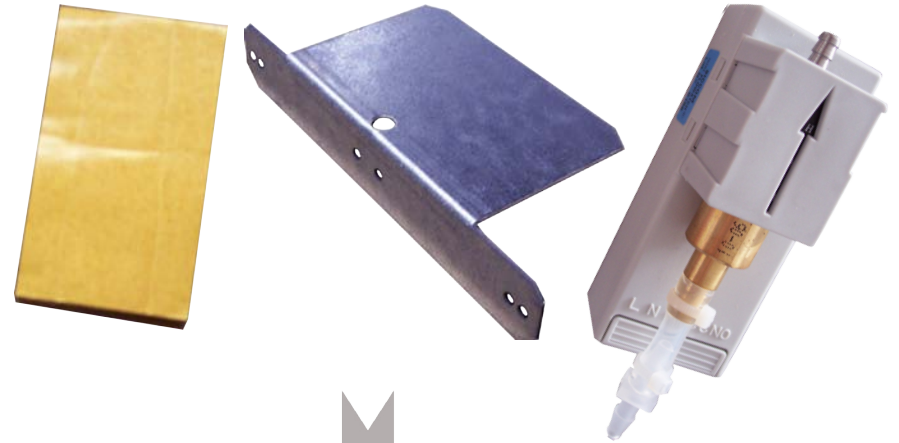




14

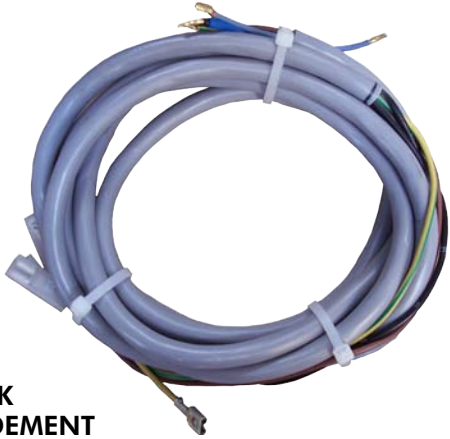


15



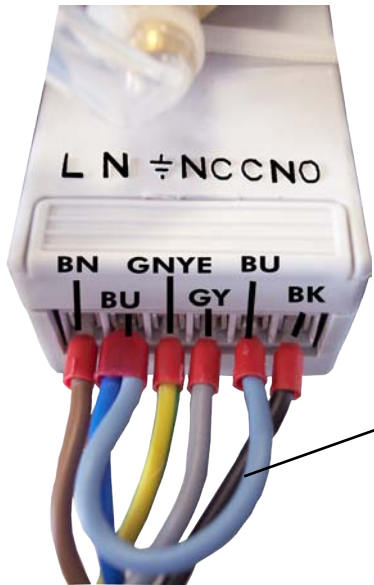
example of assembly: operating face on the right  
exemple de montage: face de service à droite  
Montagebeispiel: Wartungsseite rechts  
esempio d'assemblaggio: facciata di servizio a destra  
ejemplo de montaje: cara de servicio a la derecha

16

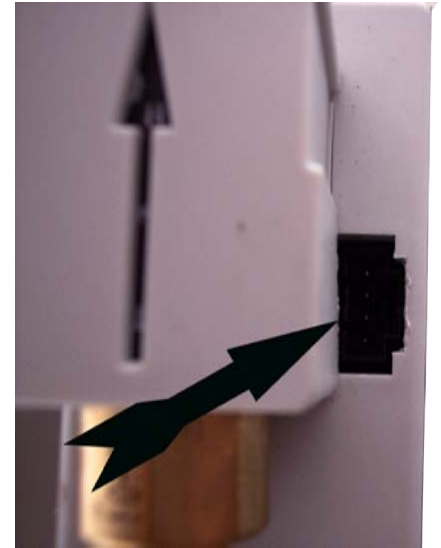
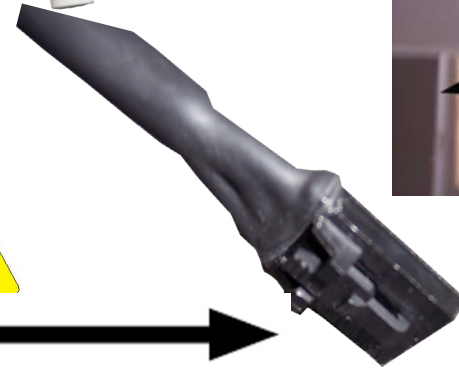


TERMINAL BLOCK  
BORNIER DE RACCORDEMENT  
KLEMMLEISTE  
MORSETTI SCATOLA ELECT.  
BORNERA DE CONEXION

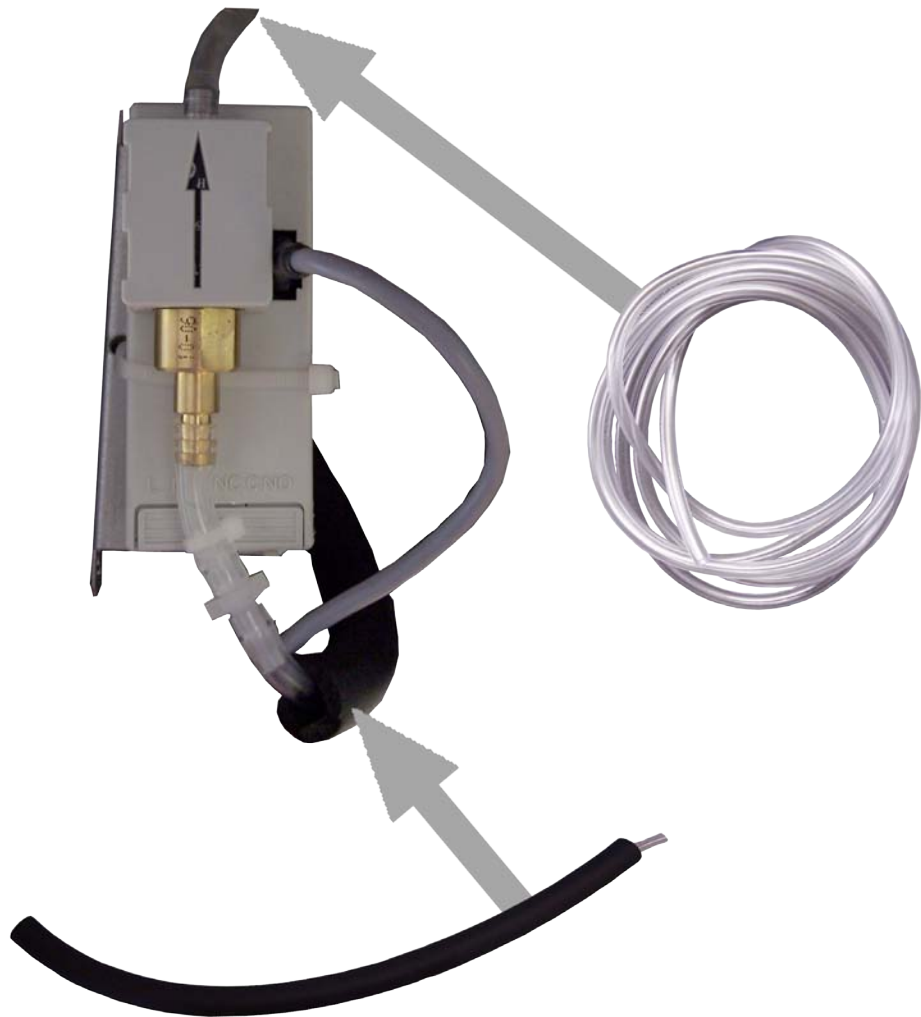
AQUANET



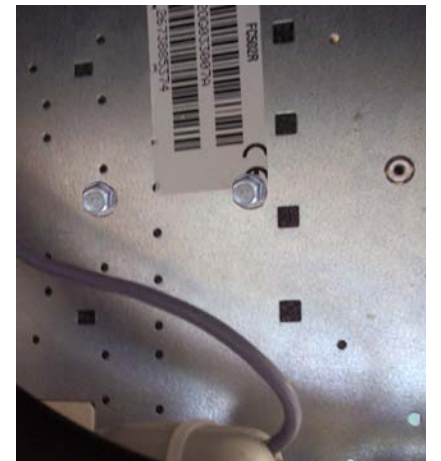
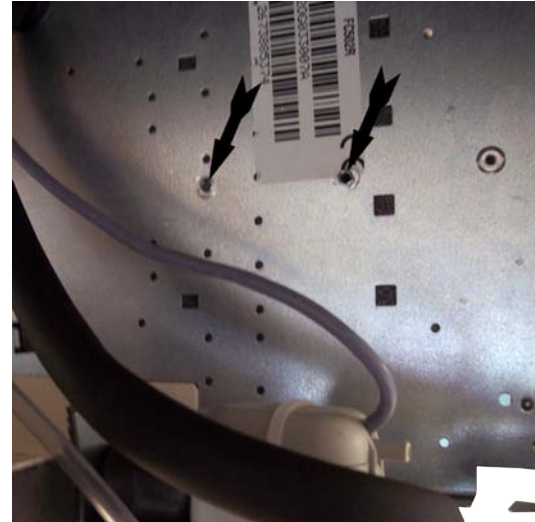
17



18



19

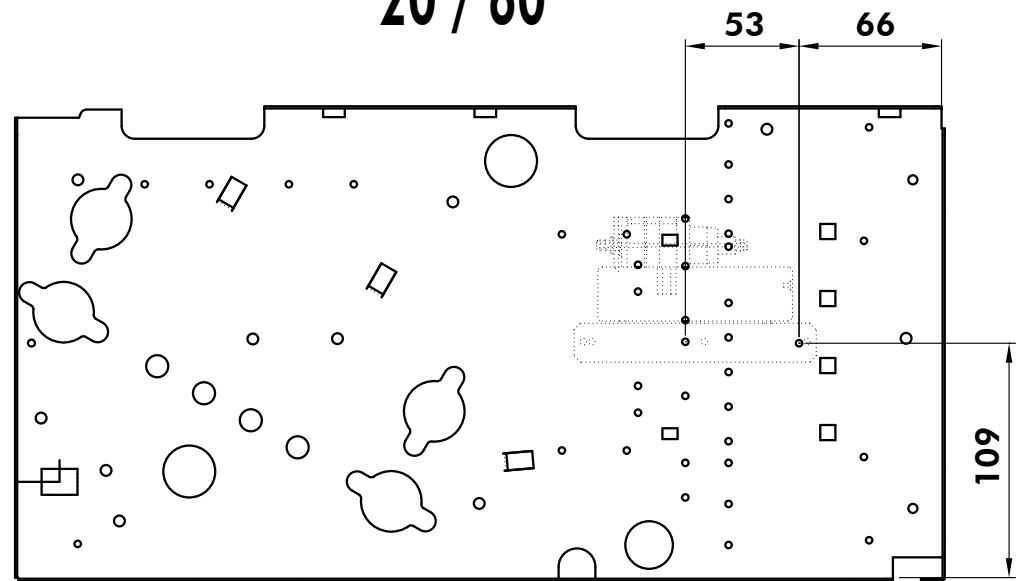


20



PUMP SUPPORT POSITION  
POSITION SUPPORT POMPE  
POSITION DES HALTERS DER PUMPE  
POSIZIONE SUPPORTO POMPA  
POSICIÓN SOPORTE BOMBA

**20 / 60**



**70**

