

AQU@FAN: CONDENSATE LIFT PUMP - AHC AHN 80/90
AQU@FAN: KIT POMPE RELEVAGE DES CONDENSATS - AHC AHN 80/90
AQU@FAN: BAUSATZ KONDENSWASSERFÖRDERPUMPE - AHC AHN 80/90
AQU@FAN: KIT POMPA DI SOLLEVAMENTO DELLE CONDENSE - AHC AHN 80/90
AQU@FAN: KIT BOMBA DE ELEVACIÓN DE CONDENSADOS - AHC AHN 80/90



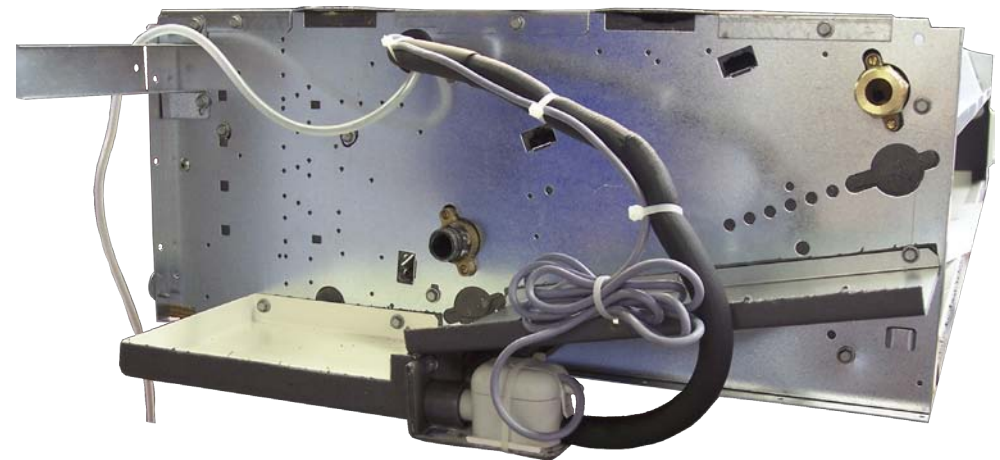
POWER SUPPLY MUST BE SWITCHED OFF BEFORE STARTING TO WORK IN THE ELECTRIC CONTROL BOX!

MISE HORS TENSION OBLIGATOIRE AVANT TOUTE INTERVENTION DANS LES BOITIERS ELECTRIQUES.

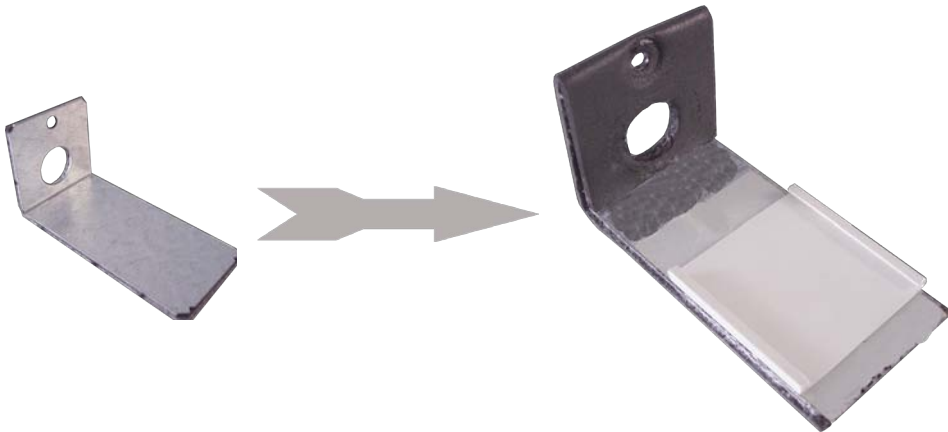
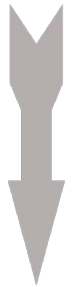
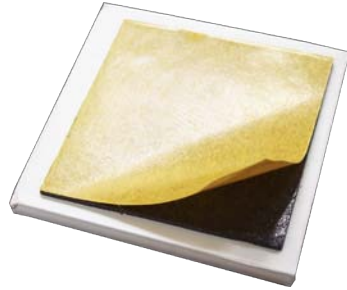
VOR JEDEM EINGRIFF AN DEN ANSCHLUSSKÄSTEN UNBEDINGT DAS GERÄT STROMLOS SCHALTEN!

PRIMA DI OGNI INTERVENTO SULLE CASSETTE ELETTRICHE ESCLUDERE TASSATIVAMENTE L'ALIMENTAZIONE !

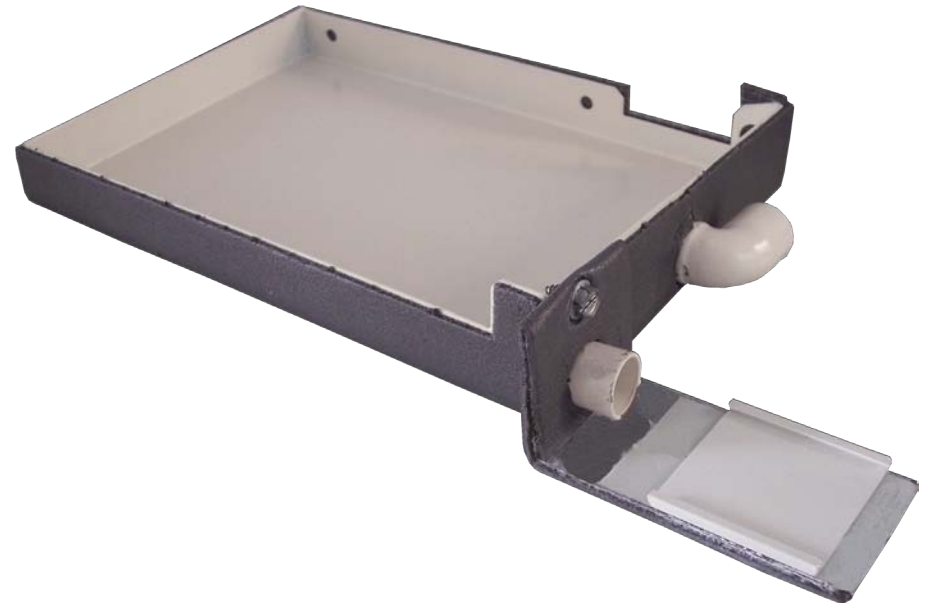
PUESTA FUERA DE TNSIÓN OBLIGATORIA ANTES DE CUALQUIER INTERVENCIÓN EN LAS CAJAS ELÉCTRICAS!



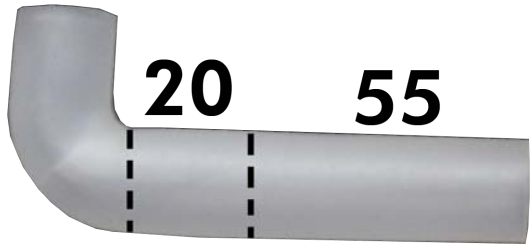
1



2



3

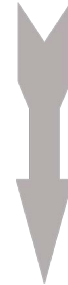


L=20 mm



L=55 mm

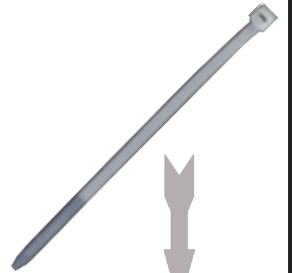
4



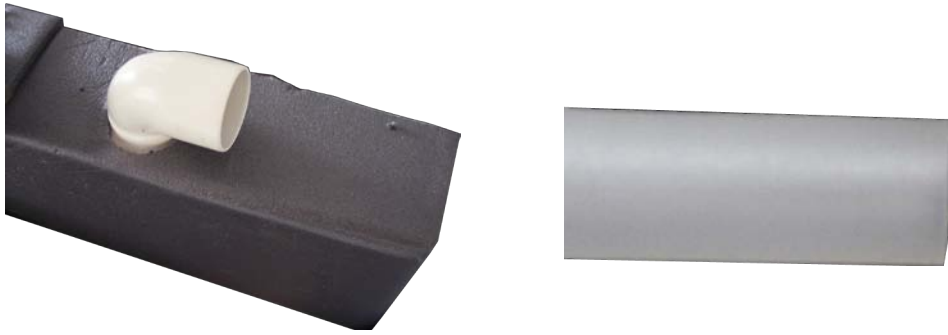
5



6



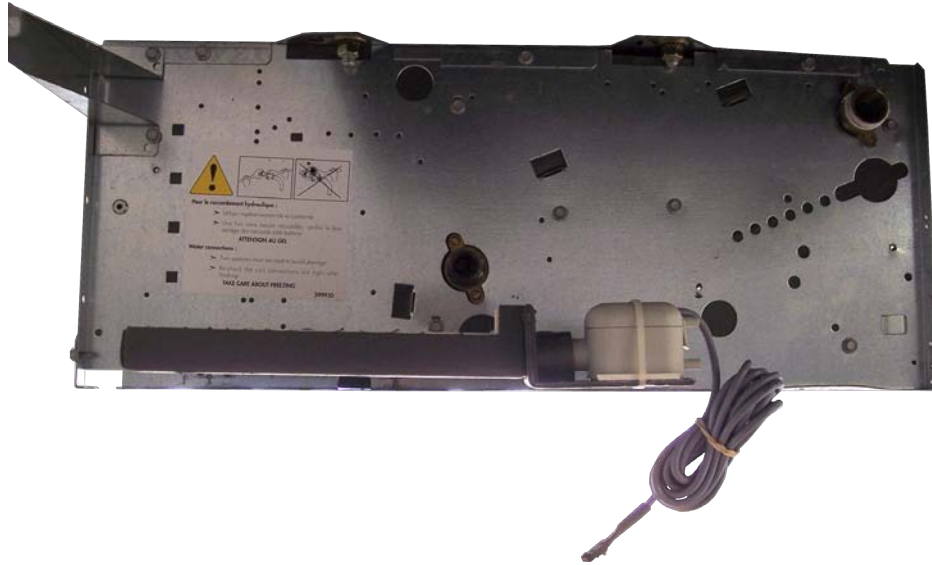
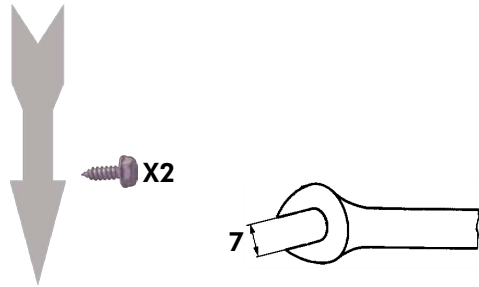
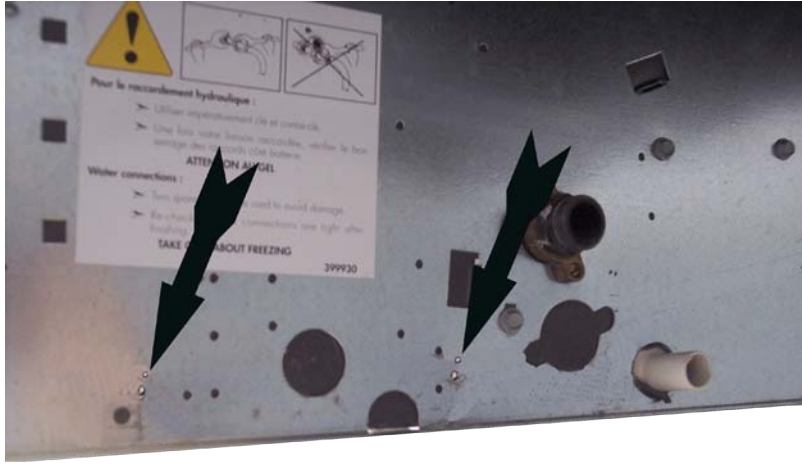
7



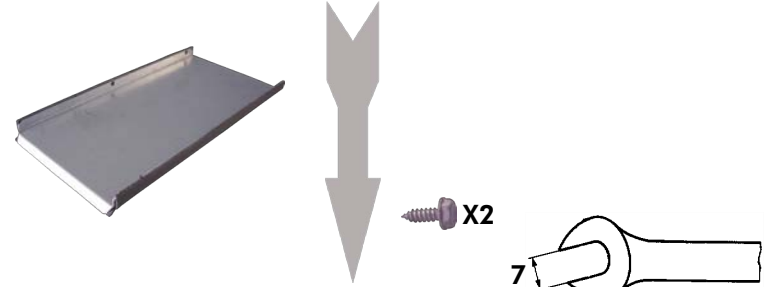
8



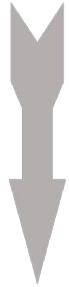
9



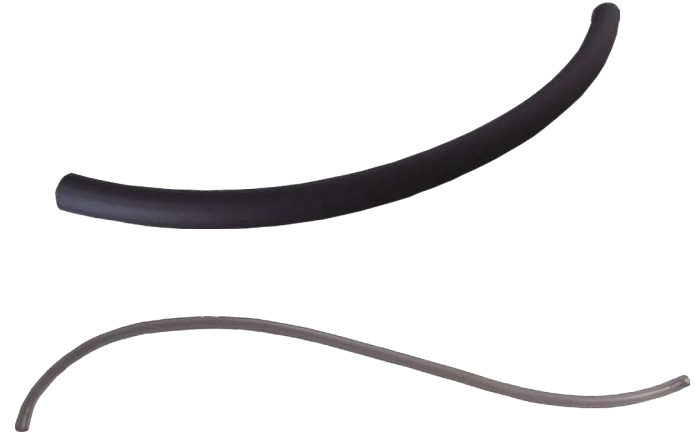
10



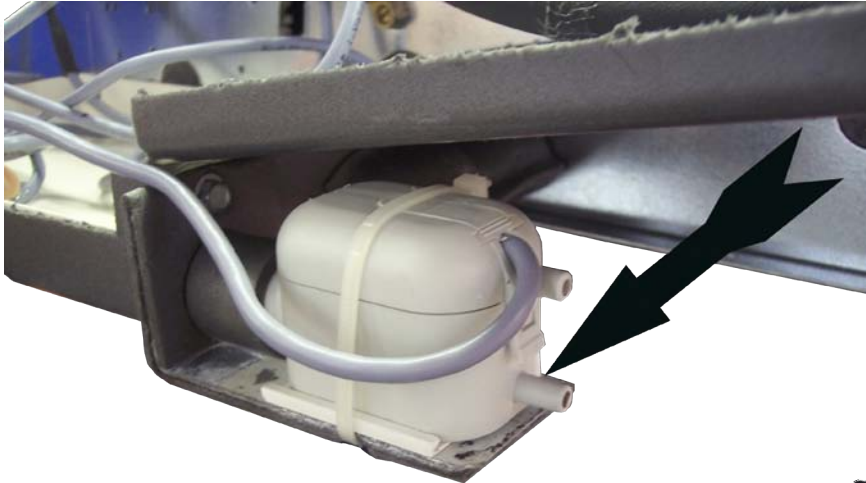
11



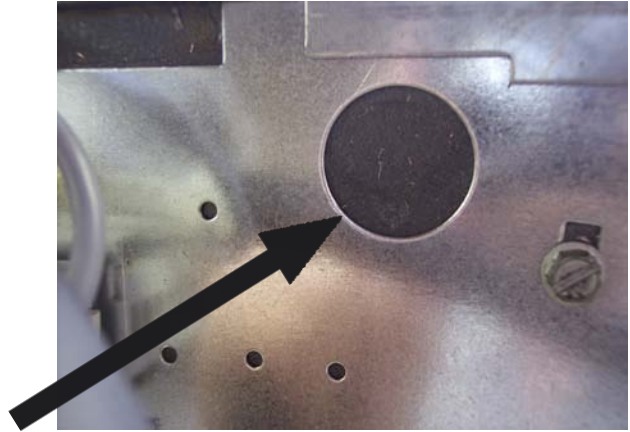
12



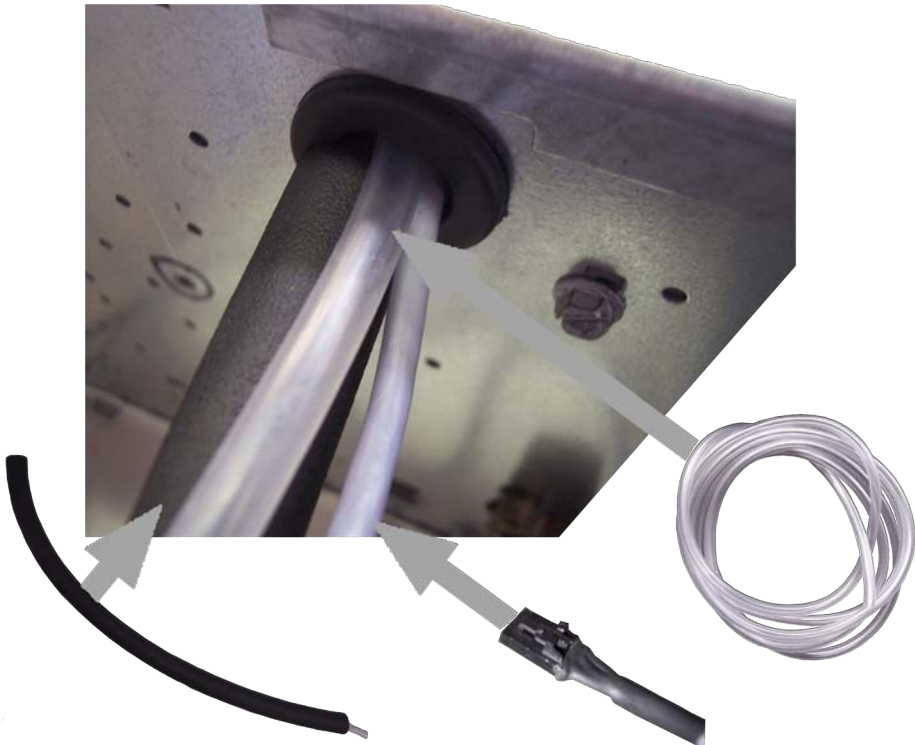
13



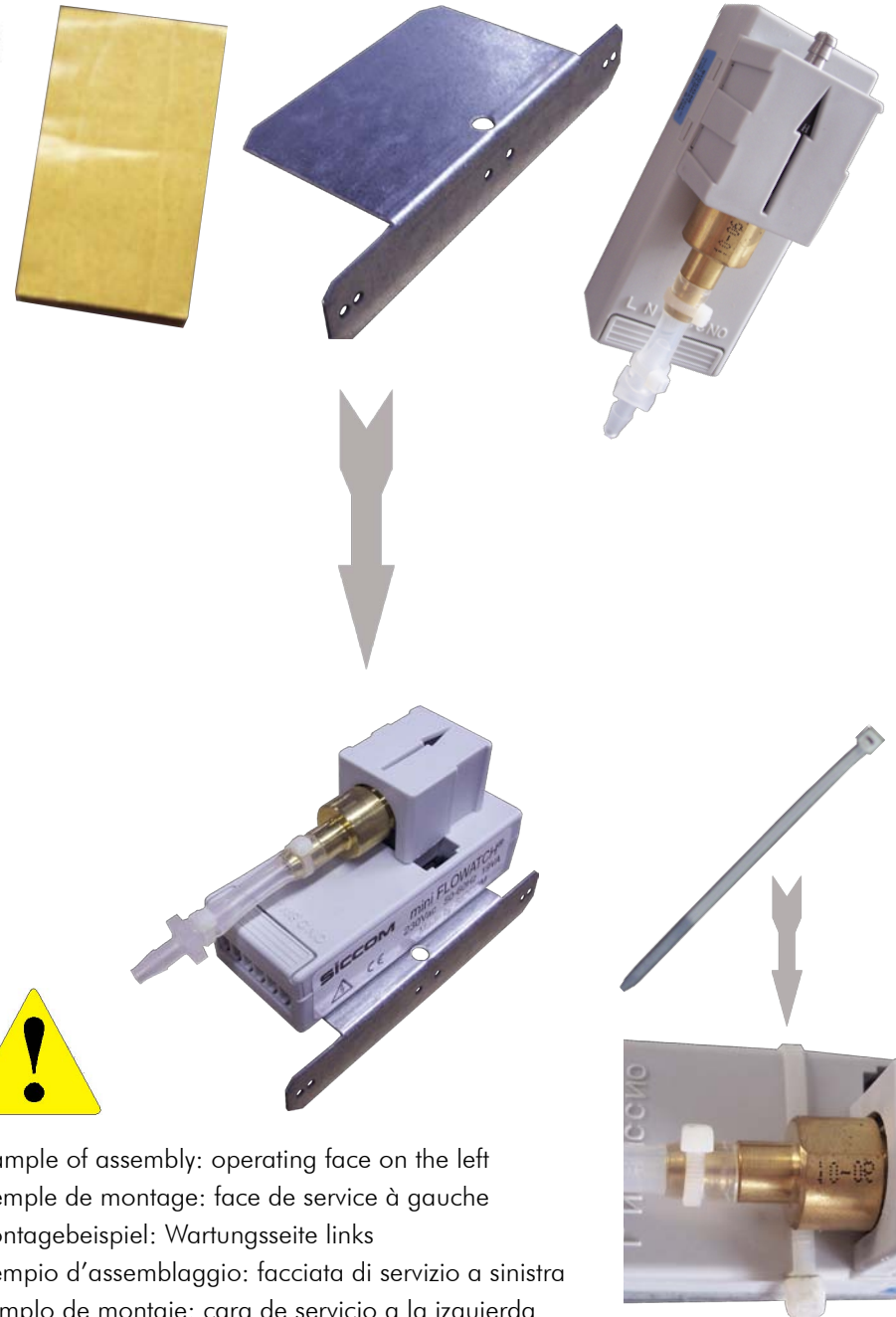
14



15

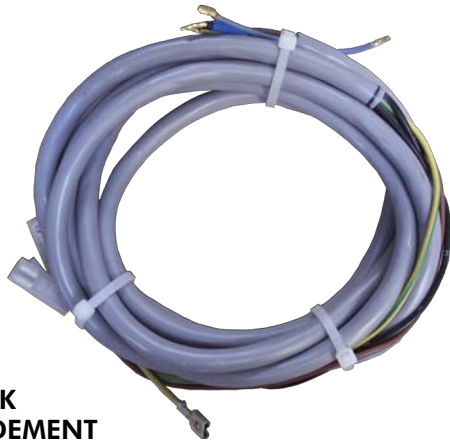


16



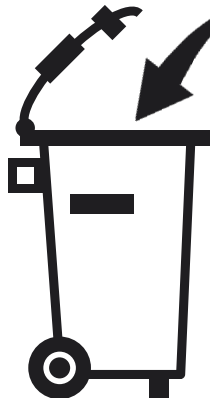
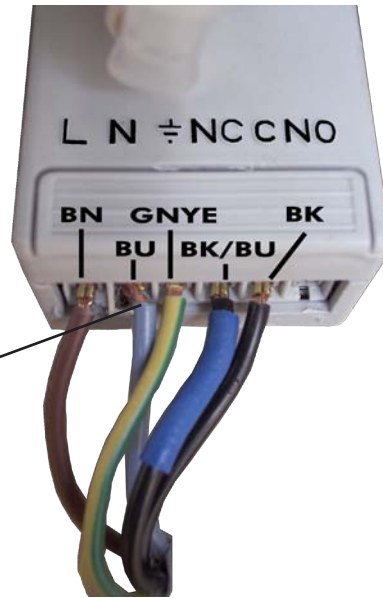
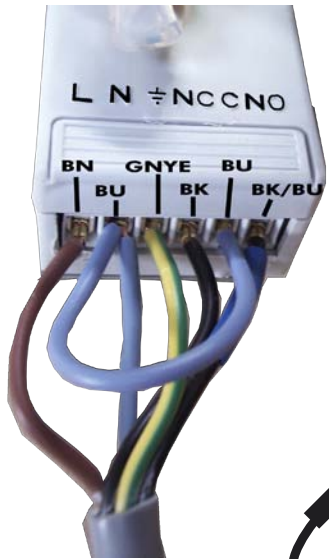
example of assembly: operating face on the left
exemple de montage: face de service à gauche
Montagebeispiel: Wartungsseite links
esempio d'assemblaggio: facciata di servizio a sinistra
ejemplo de montaje: cara de servicio a la izquierda

17

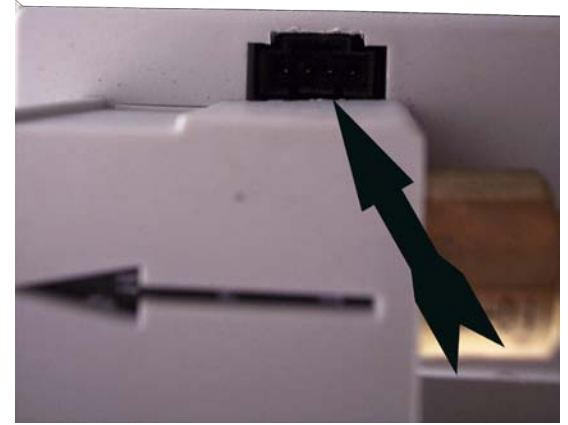


TERMINAL BLOCK
BORNIER DE RACCORDEMENT
KLEMMLEISTE
MORSETTI SCATOLA ELECT.
BORNERA DE CONEXION

AQUANET



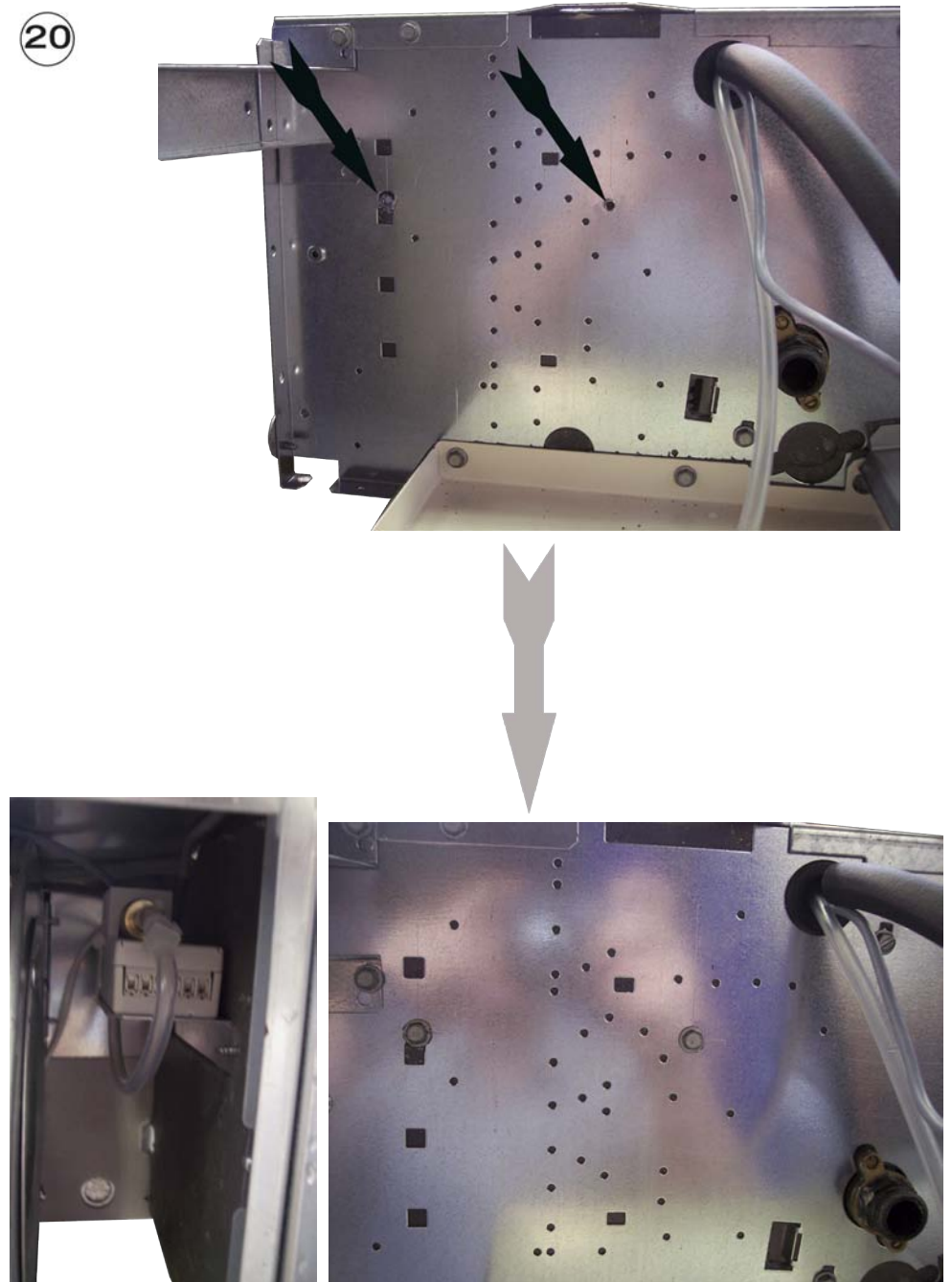
18



19



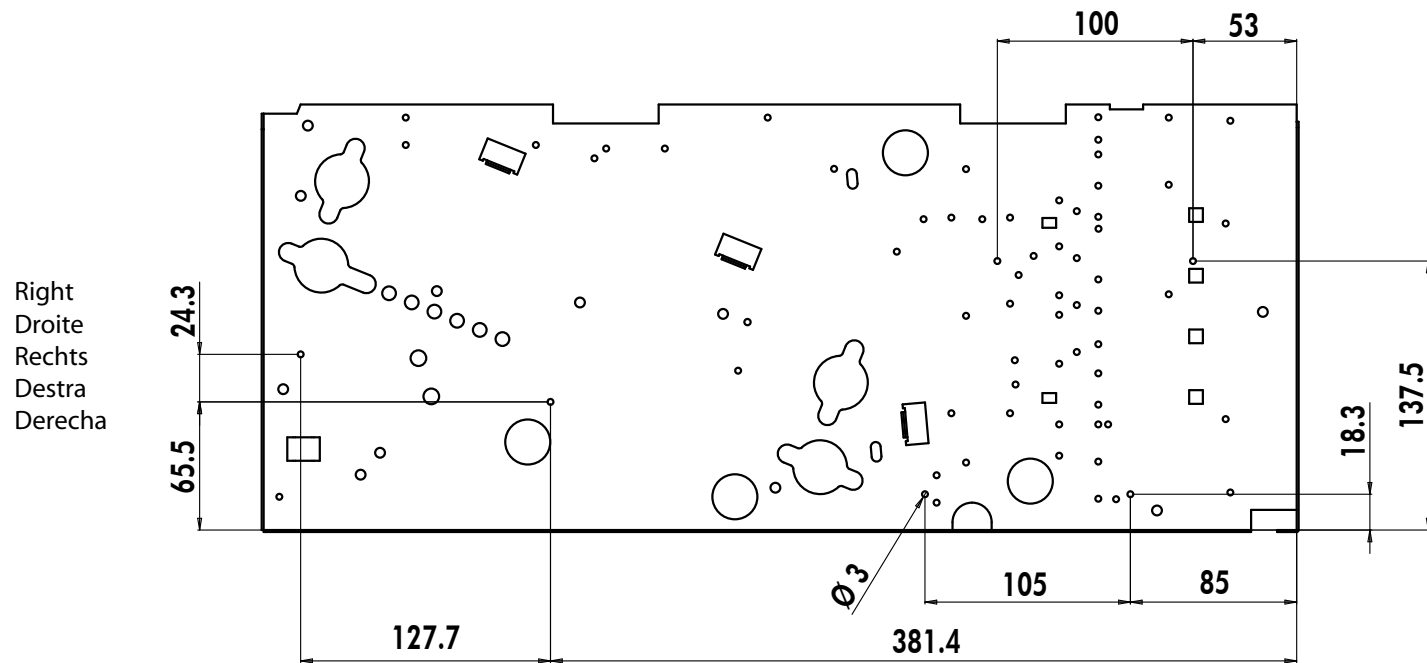
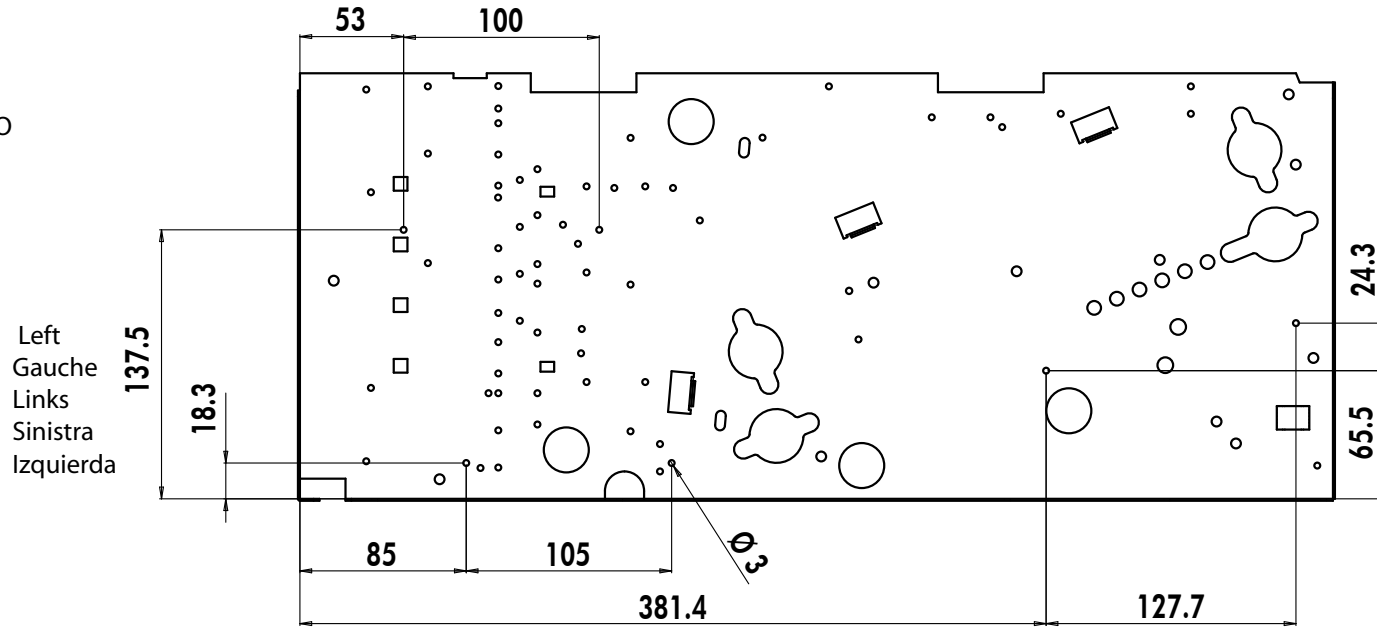
20



21

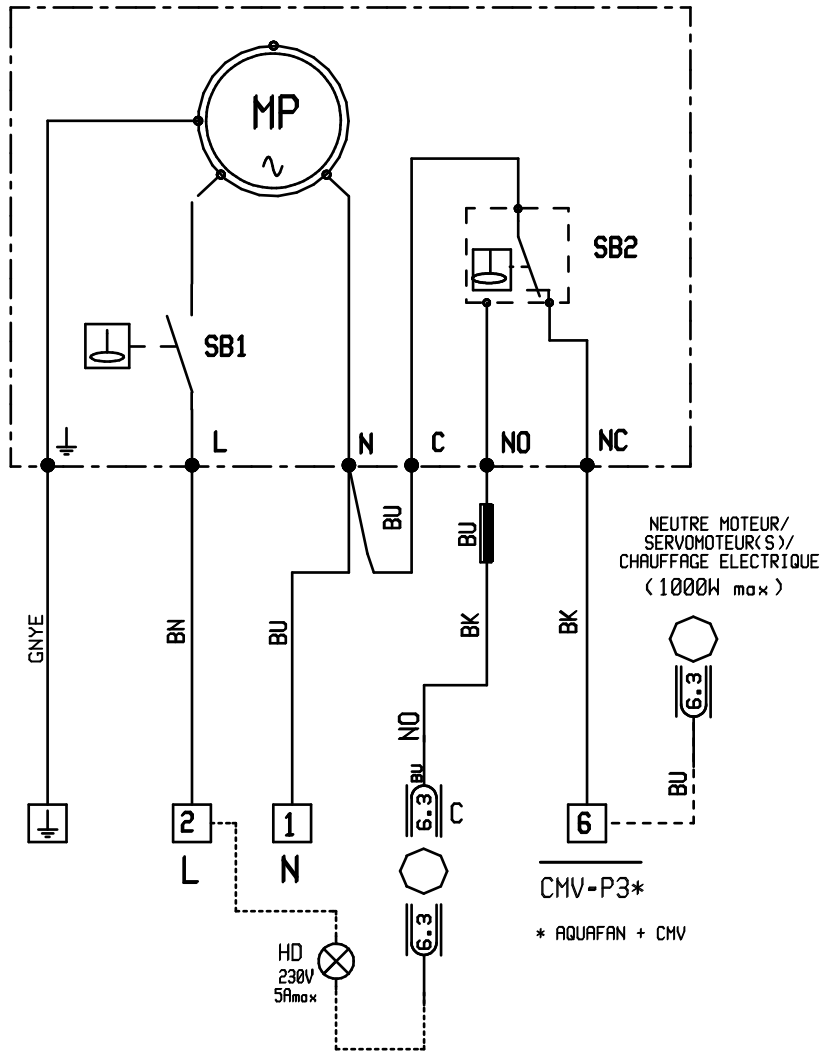


OPERATING FACE
 FACE DE SERVICE
 WARTUNGSSEITE
 FACCIATA DI SERVIZIO
 CARA DE SERVICIO

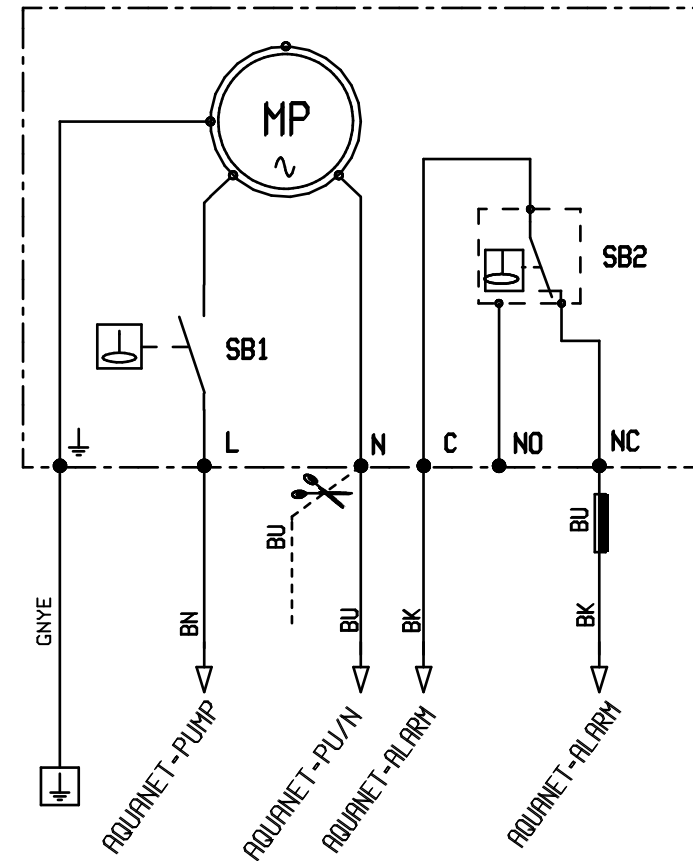


SE 3608
CODE 399986
230V-50Hz

OPTION POMPE DE RELEVAGE-MONTAGE SUR AQUAFAN



MODELE AQUANET



BK	NOIR	BLACK	NEGRO	SCHWARTZ	NERO
BU	BLEU	BLUE	BLU	BLAU	AZUL
GNYE	VERT/JA.	GREEN/YELL.	GIALLO/V.GRUN/G.	VERDE/AM.	VERDE/AM.
BN	BRUN	BROWN	MARRON	BRAUN	MARRONE

MP POMPE DE RELEVAGE CONDENSAT
SB1 CAPTEUR DE NIVEAU D'EAU-MARCHE
SB2 CAPTEUR DE NIVEAU D'EAU-DEFAUT
C SIGNAL "NO" DE DEFAUT EN ATTENTE
HD VOYANT SIGNAL DEFAUT (non fourni)

MP CONDENSATE PUMP
SB1 WATER LEVEL SENSOR MP ON
SB2 WATER LEVEL SENSOR ALARM
C CONTACT ALARM"NO" ON STANBY
HD ALARM SIGNAL (no fitted)

MP MOTOR POMPA CONDENSATO
SB1 SENSORE DI LIVELLO-MARCIA
SB2 SENSORE DE LIVELLO-ALLARME
C CONTACT"NO"ALLARMA IN ATTESA
HD SPIA DIFETTO (non fornita)

MP MOTOR BOMBA CONDENSADO
SB1 CAPTADOR DE NIVEL DE AGUA MP
SB2 CAPTADOR DE NIVEL DE AGUA(ALARM)
C CONTACT"NO"ALARMA EN ESPERA
HD INDICADOR LUMINOSO FALLO(no sum.)

MP MOTORPUMP KONDENSAT
SB1 WASSERSTANDMESSFUHLER MP EIN
SB2 WASSERSTANDMESSFUHLER ALARMSIGNAL
C CONTACT"NO" ALARMIERT IN WARTEN
HD ALARMLAMPE(bouseits)